

## What's NEW in VCS 9.5.1

IMPORTANT! - Licensing is NOT included in software shipments. See "How to get a license" below for details.

August 29, 2024

Dear VERICUT® Composites Simulation User:

Thank you for your continued investment in VERICUT Composites Simulation (VCS), an important part of your NC programming and machining process!

VERICUT Composites Simulation 9.5.1 is packed with new features making it more powerful and easier to use. This letter describes important changes in VERICUT Composites Simulation 9.5.1. Please take a moment to review what's new and improved in this release.

### Maintenance and Licensing Information

**NOTE:** This software requires VERICUT 9.5 licensing and [Sentinel 9.8.1 License Server installation](#).

**To Get a License** – use the link below to submit a License Request:

[http://www.cgtech.com/vericut\\_support/request-license/](http://www.cgtech.com/vericut_support/request-license/).

Licensing is sent via Email only.

VCS 9.5.1 runs on 64-bit Windows, and is supported on Windows 10 and 11 computers.

*Software maintenance keeps you on the cutting edge* - CGTech provides update software to customers with current software maintenance. Your continued maintenance ensures that you have the most advanced verification technology available. If your maintenance has expired, please contact your CGTech representative (<http://www.cgtech.com/about/contact-us/>).

Sincerely,

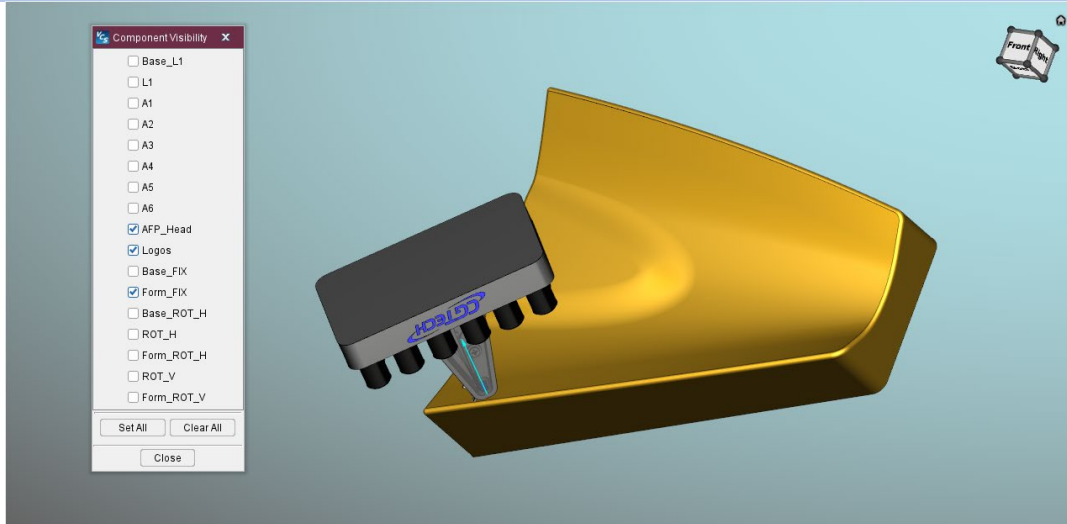
Olivier Munaux

CGTech VERICUT Composites Product Manager

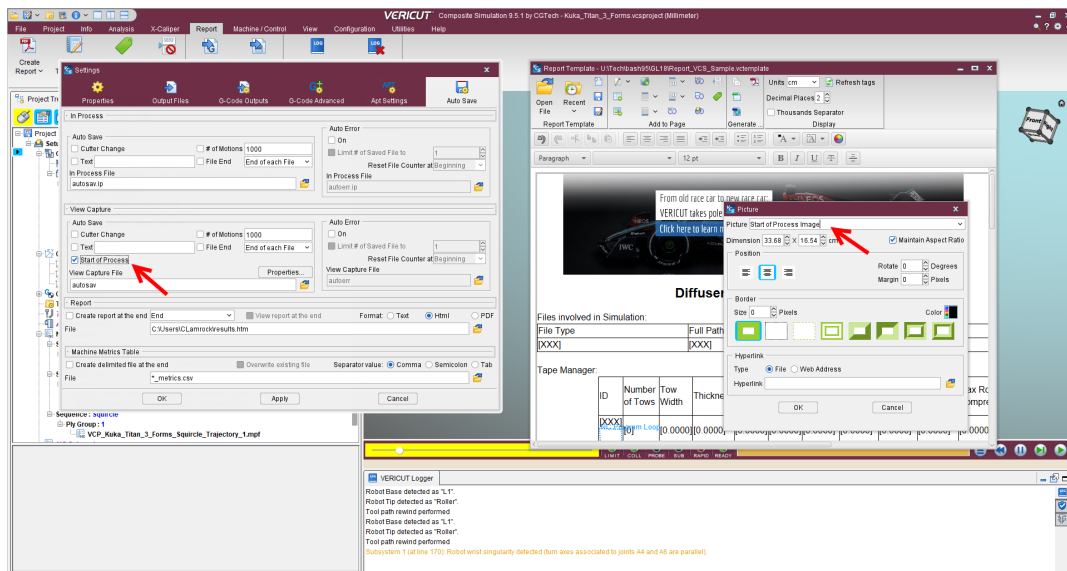
## VCS 9.5.1

### Enhancements in VCS 9.5.1

Workpiece View now includes the ability to display the Roller and associated head components.



Start of Process images are now available in the VCS Report Template.



## Problems Resolved in VCS 9.5.1

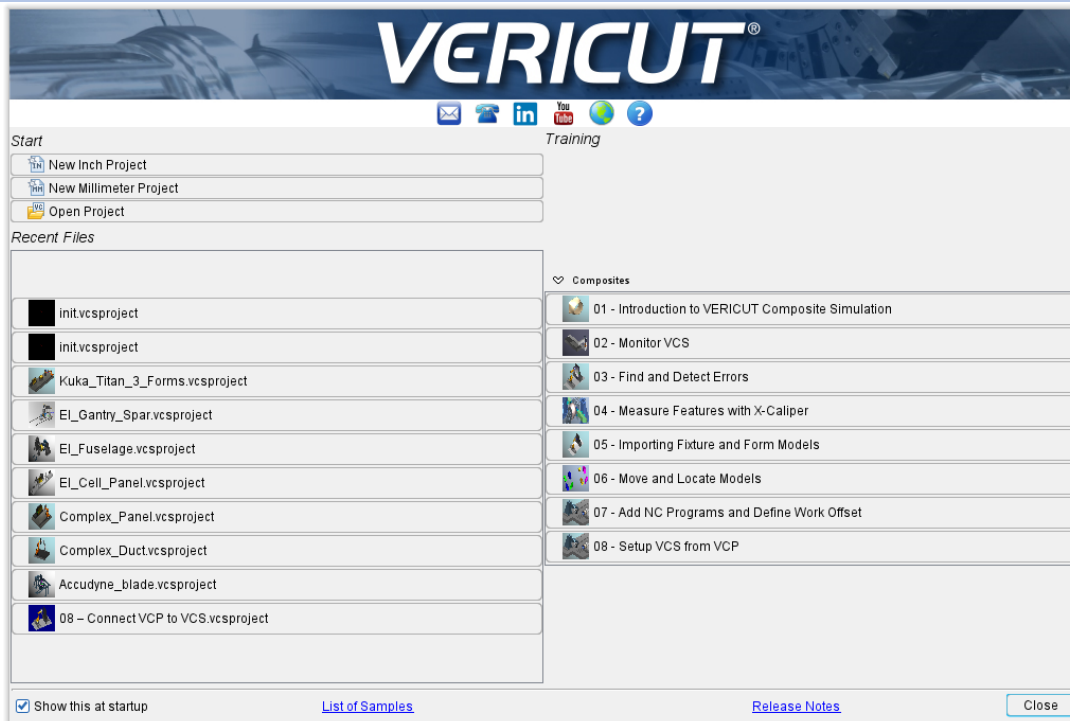
VCS now shows Tool Tip coordinates in Info -> Status before tape the starts laying.

An edge-case issue where the robot logic caused an improper robot pose has been resolved.

## VCS 9.5

### Enhancements in VCS 9.5

Streamlined the VERICUT Welcome Window for easier navigation.



## Problems Resolved in VCS 9.5

An issue causing poor tape projections when Roll Center Offset is used in certain situations has been resolved.

An issue preventing the switch between wide tape (ATL) widths has been resolved.